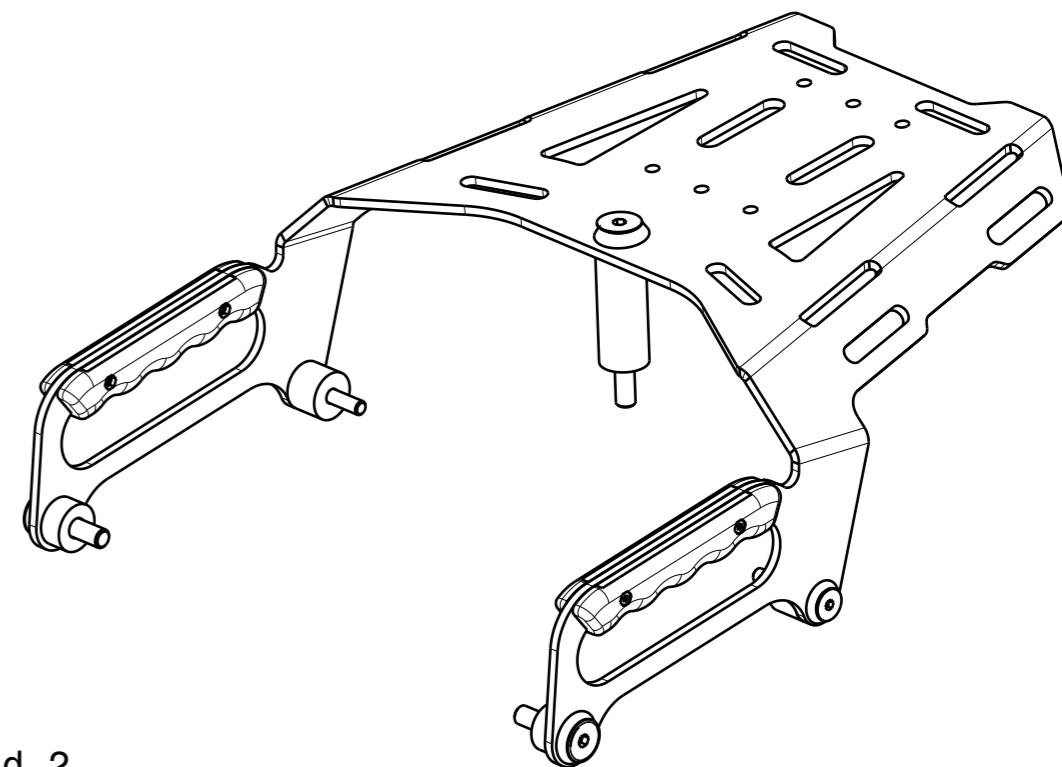
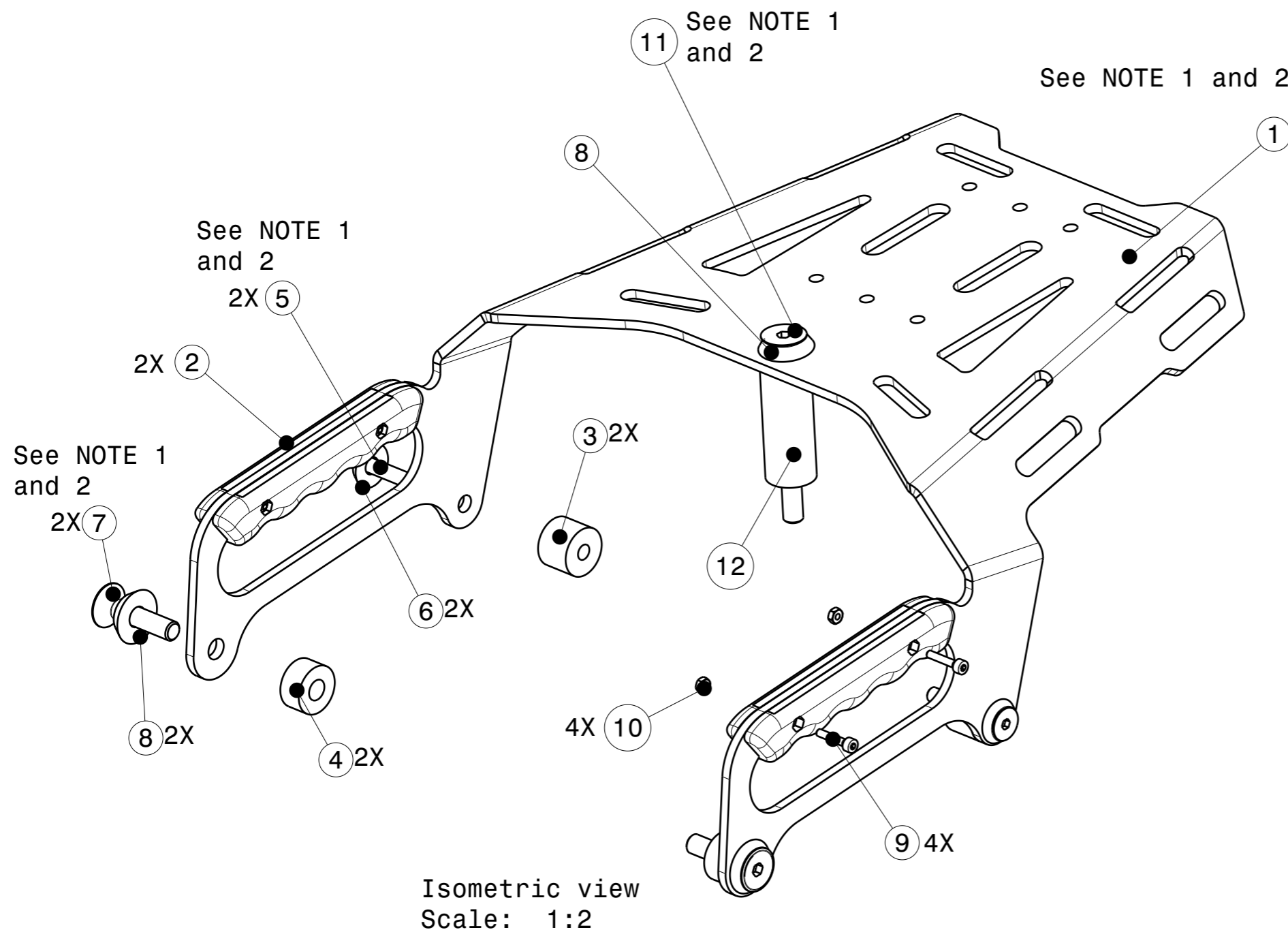


NOTES:

1. To be tightened according to Aprilia Tuareg 660 Workshop Manual.
2. Do not use Loctite or other thread locking compounds. Use copper grease.
3. Assembly sequence:
 - 3.1 Put the handles in place.
 - 3.2 Insert the M3 screws and nut and tighten them to 0.6Nm.
Do not overtighten them. See NOTE 1.
 - 3.3 Position the Rear Rack, then insert spacers, washers and screws.
 - 3.4 Tighten the two M8 screw. See NOTE 1.
 - 3.5 Tighten the two M6 screws. See NOTE 1.



Isometric view
Scale: 1:3



Isometric view
Scale: 1:2

PART LIST

| Description | Part Number | F/N | Qty |
|------------------|---------------|-----|-----|
| Rear Rack HD | FGWX-04-B-001 | 1 | 1 |
| Handle single | FGWX-04-B-006 | 2 | 2 |
| Spacer 6x20x15 | | 3 | 2 |
| Spacer 8x20x10 | | 4 | 2 |
| Csk Screw M6x40 | | 5 | 2 |
| Csk Washer M6 | | 6 | 2 |
| Csk Screw M8x35 | | 7 | 2 |
| Csk Washer M8 | | 8 | 3 |
| Screw M3x16 | | 9 | 4 |
| Nut M3 | | 10 | 4 |
| Csk Screw M8x80 | | 11 | 1 |
| Center Spacer HD | FGWX-04-B-003 | 12 | 1 |

| | | | | | |
|-----------------|-----------------------|--|--------------|--------------|--|
| SCALE 1:1 | | BREAK ALL EDGES (R ALT. 45°) 0.1-0.5 THREAD TOL. 6g/6h ISO R965/1 ALL DIM. INCLUDE SURFACE TREATMENT | | GWORX | |
| ROUGH Ra μm | FILLET RADI | DIM TOL | ANG TOL | | |
| DATE | | DESCRIPTION Rear Rack HD | | | |
| DESIGN GWORX | | - | | | |
| DRAWN GWORX | | - | | | |
| MAT. | | SURF. TREATMENT | | | |
| SIZE | DOC. NO. FGWX-04-B | REV. | SHEET 1 OF 1 | | |