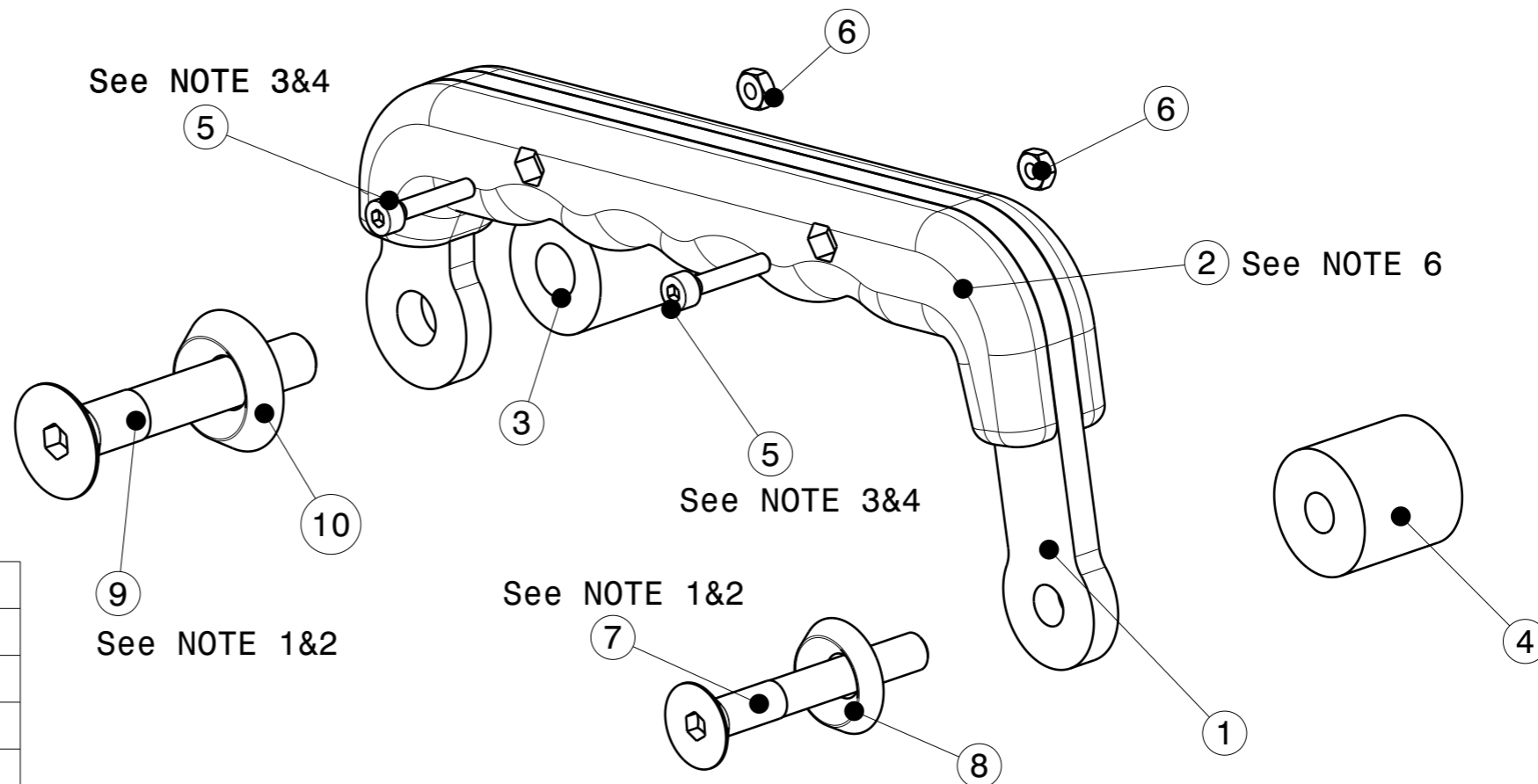


NOTES:

1. To be tightened according to Aprilia Tuareg 660 Workshop Manual.
2. Do not use Loctite or other thread locking compounds. Use copper grease.
3. Do not overtighten. Nominal tightening torque: $0.5 \pm 0.1 \text{Nm}$
4. Assembly sequence:
 - 4.1 Slide the handle on the Handle Structure, from the bottom.
 - 4.2 Insert M3 screws and nuts as shown. The nuts must be mounted on the saddle side.
 - 4.3 Position spacers, handles, washers and screws as shown.
 - 4.5 Tighten the M8 screw.
 - 4.6 Tighten the M6 screw.
5. Left handle shown, for the right handle all screws, washers and spacers to be positioned symmetrically.
6. The handles will be delivered pre-assembled, so 4.1 and 4.2 to be used only in case of disassembly and reassembly.



PART LIST			
Description	Part Number	F/N	Qty
Handle structure	FGWX-09-A-001	1	1
Handle single	FGWX-09-A-004	2	1
Spacer 8x20x15		3	1
Spacer 6x20x20		4	1
Screw M3x16		5	2
Nut M3		6	2
Csk Screw M6x45		7	1
Csk Washer M6		8	1
Csk Screw M8x50		9	1
Csk Washer M8		10	1

Isometric view 1

SCALE 1:1		BREAK ALL EDGES (R ALT. 45°) 0.1-0.5		GWORX	
ROUGH Ra μm -		FILLET RADII -			
DATE -		THREAD TOL. 6g/6H ISO R965/1		ANG TOL -	
DESIGN GWORX		ALL DIM. INCLUDE SURFACE TREATMENT		PROJECTION	
DRAWN GWORX		DESCRIPTION Handle			
MAT. -		SURF. TREATMENT -			
SIZE -	DOC.NO. FGWX-09-A	REV. A	SHEET 1 OF 1		